



Western Sydney Airport Visitor Centre and Site Accommodation – works underway.

Dear neighbour,

Works for the Western Sydney Airport Visitor Centre and Site Accommodation are underway. Once complete, the facility will serve as an education hub and Project office for the Western Sydney Airport.

Over the coming months, we'll be delivering the following works:

- bulk earthworks
- detailed excavation and drainage work
- construction of in ground services
- installation of a kiosk substation
- foundation works for Visitor Centre
- Eaton Road redevelopment
- pavement construction on Eaton Road
- establishment of site office

All works are being carried out by Watpac Construction and are expected to be completed mid-2019.

Kiosk Substation

The kiosk substation will be approximately 3.1 metres long, 1.3 metres wide and 1.4 metres high. It is an essential piece of infrastructure that will support electrical supply for the Visitor Centre.

Site compound

The Visitor Centre work site is on the southern end of Eaton Road (see map overleaf).

Traffic changes on local roads

Traffic control and pedestrian management will be in place to ensure the safety of motorists, residents and workers. Construction vehicles will be using The Northern Road and Eaton Road as works are carried out.

Measures will be in place to minimise impacts to you during the work. These include temporary speed zones, traffic controllers and temporary barriers around work areas.

If you travel along the route, please allow extra travel time and follow the signage and direction of traffic controllers.

Other Airport works nearby

CPBLL JV will be carrying out the removal of powerlines that cross The Northern Road, south of Eaton Road and up to Dwyer Road on Friday, 15 March 2019, between 10am and 3:00pm. There will be a power interruption from 8am to 4pm during these works. If you have any questions about this please contact Endeavour Energy on 131 003.

Where are we working?

Eaton Road and The Northern Road,
Luddenham

What are the construction hours?

7am to 6pm Mon to Fri
7am to 5pm Sat

No work will be done on Sundays or public holidays without prior notice.



We speak your language

Need an interpreter?
Call the Translating and Interpreting Service on **131 450**.

VCSA-CEN-002

Contact us for more information on:

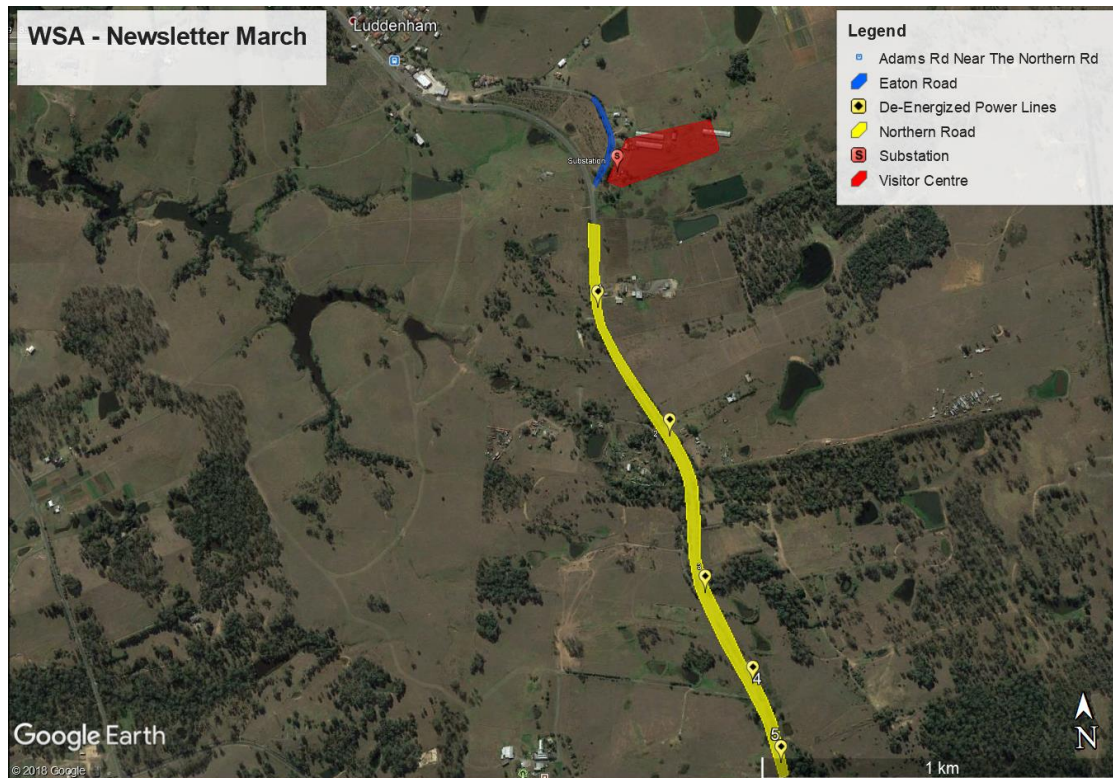
Western Sydney Airport

Ph: 1800 972 972

E: info@wsaco.com.au



Location of works



Where are we working?

Eaton Road and The Northern Road, Luddenham

What are the construction hours?

7am to 6pm Mon to Fri
7am to 5pm Sat

No work will be done on Sundays or public holidays without prior notice.

We will continue to update you as work progresses with the construction of the Western Sydney Airport. If you have any questions about this work, please call 1800 972 972 or email info@wsaco.com.au.



We speak your language

Need an interpreter?
Call the Translating and Interpreting Service on **131 450**.



Power Outage

Please be advised there will be a power interruption from 8am to 4pm on 15th March. During this work, if you have any questions please contact Endeavour Energy on 131 003.

VCSA-CEN-002

Contact us for more information on:

Western Sydney Airport
Ph: 1800 972 972
E: info@wsaco.com.au

