



**Western  
Sydney  
Airport**

## **Bulk earthworks**

November – December 2019

# **Preparation works for Bulk Earthworks**

Dear neighbour,

In August, Western Sydney Airport awarded the Bulk Earthworks contract to the CPB Contractors and Lendlease Joint Venture (CPBLL JV). This work involves moving about 25 million cubic metres of earth to support construction of the major elements of the airport, including the runway and passenger terminal.

### **Preparation work**

Preparation work for bulk earthworks will continue from October until the end of 2019. The work includes survey, investigation and salvage work, minor earthworks and clearing, construction of temporary facilities, and removal of redundant services.



*Progress on early earthworks*

### **Standard constructions hours**

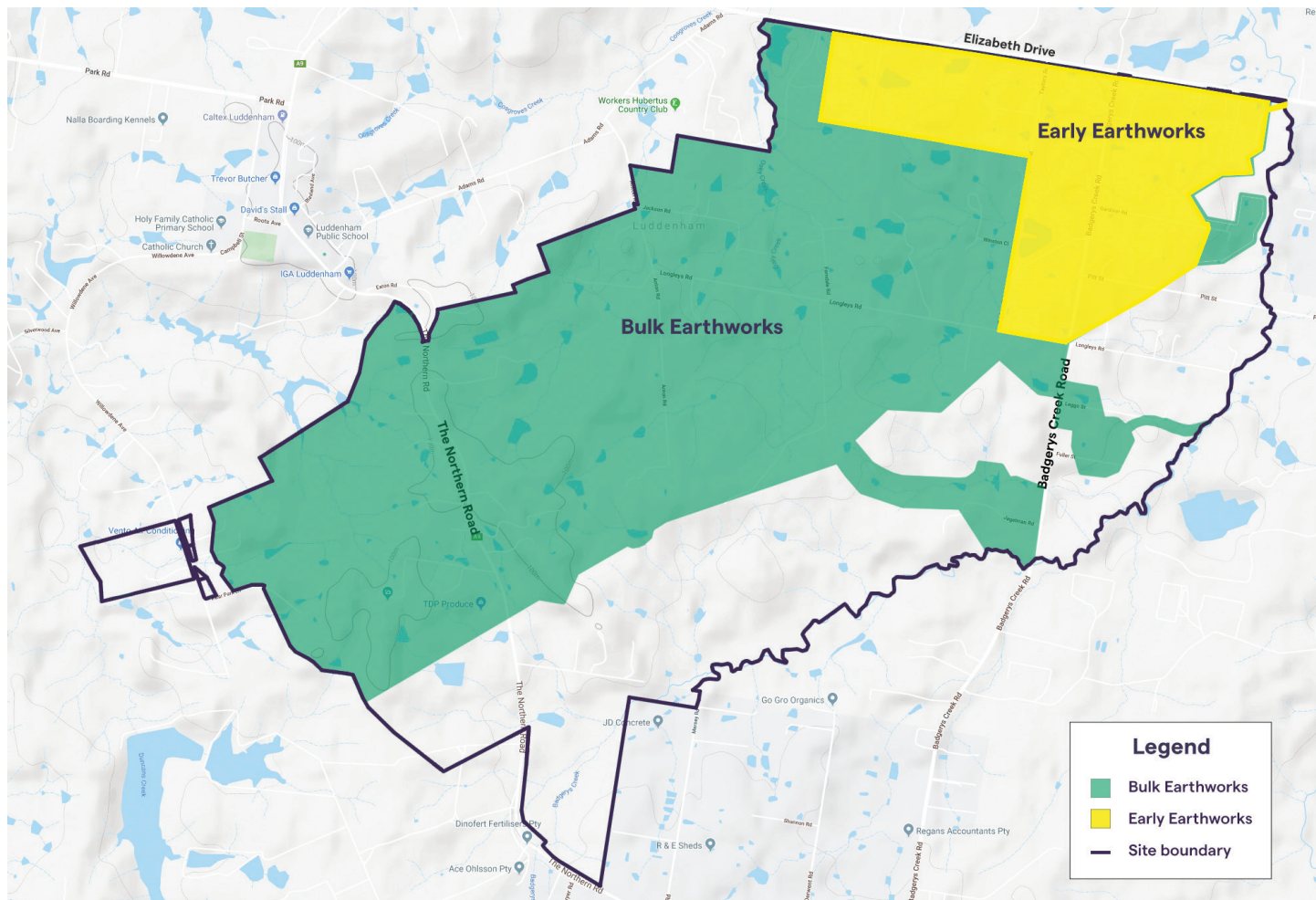
Standard construction hours are from 7am to 6pm, Monday to Friday, and 8am to 1pm on Saturdays.

### **Out of hours work**

Some out of hours works will be required during the delivery of the Bulk Earthworks work. We will consult and notify any impacted residents.

We will continue to work closely with our neighbours as we deliver both the Early Earthworks and Bulk Earthworks packages to build Western Sydney International Airport and we will continue to update you as work progresses.

We will keep you informed throughout this next phase of the airport construction and look forward to sharing regular updates with you. Should you require any further information regarding the construction program please contact the project team on the details overleaf. If you would like to learn more about the project generally please visit us at our Experience Centre on Eaton Road, Luddenham.



Bulk Earthworks footprint is identified by the green-coloured area on the map above



## Where are we?

Our site office compound will be located at the corner of Elizabeth Drive and Badgerys Creek Road.



## Construction hours

Mon to Fri 7am – 6pm  
Saturdays 8am – 1pm



## Project contact details

To find out more about the project, please contact:

### Western Sydney Airport

Ph: 1800 972 972

info@wsaco.com.au

### Bulk Earthworks

wsabe.supply@cpbljv.com.au

wsabe.employment@cpbljv.com.au

wsabe.enquiry@cpbljv.com.au



## Traffic control

Traffic controllers and signage are in place in the areas surrounding the Bulk Earthworks site.

For your safety please be aware of temporary speed zones and follow directions as required.



## We speak your language

Need an interpreter?

Call our Translating and Interpreting Service on **131 450**.



Western Sydney Airport



flyWSA



Western Sydney Airport



Western\_Sydney\_Airport

For more information, visit [westernsydney.com.au](http://westernsydney.com.au)

BEW-1901