



**Western
Sydney
Airport**



Bulk Earthworks

February 2020

Bulk Earthworks to commence for Western Sydney Airport

Dear Neighbour,

Western Sydney Airport Bulk Earthworks Project involves moving up to 25 million cubic metres of earth to support construction of the major elements of the airport, including the runway and passenger terminal.

This project is being delivered by the CPB Contractors and Lendlease Joint Venture (CPBLLJV).

Preparatory activities are underway including survey, mobilisation of earth moving plant, site establishment, heritage investigations and salvage work, minor earthworks, construction of temporary basins and removal of redundant utility services.

Over the coming months, works will also include remediation, relocation of native plants, vegetation clearing, topsoil stripping and importation of sandstone material to support construction of internal roads and haul routes.

Construction of **the main site compound** located on the corner of Elizabeth Drive and Badgerys Creek Road will continue this month with staff starting to be located on site from mid-February.

Major **earth moving activities** will commence in the coming months, please see map overleaf.

Constructions hours

Construction hours are from 7am to 6pm, Monday to Friday, and 8am to 1pm on Saturdays.

Out-of-hours work

Some out of hours works will be required during the delivery of the Bulk Earthworks Project. We will notify any impacted residents ahead of any out-of-hours works taking place.

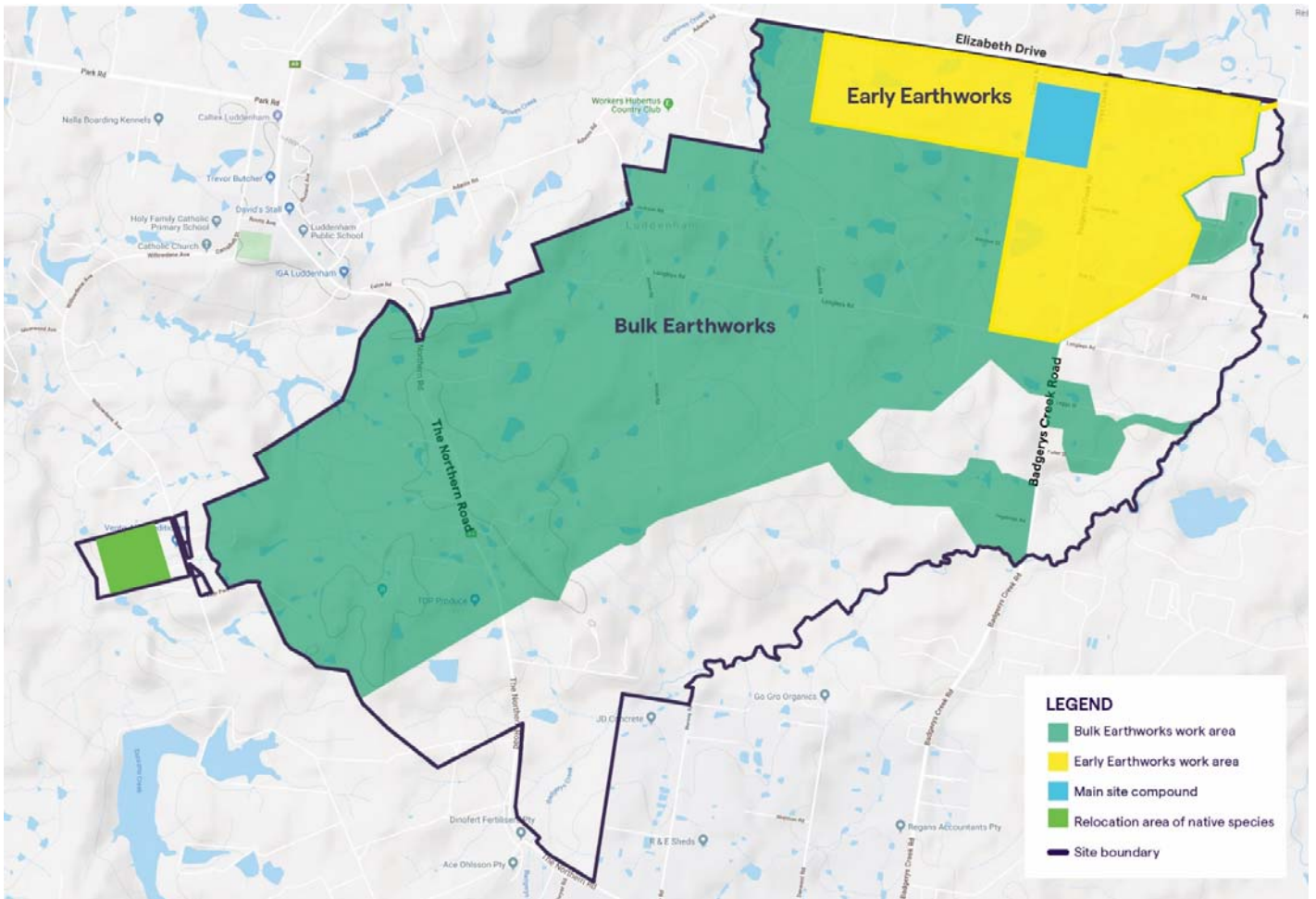
We will continue to work closely with our neighbours as we deliver both the Early Earthworks and Bulk Earthworks packages to build Western Sydney International Airport and we will update you as work progresses.

Please contact our Project team on **1800 972 972** or via email at wsabe.enquiry@cpblljv.com.au.

For more information on Western Sydney International please visit The Experience Centre located at 100 Eaton Road, Luddenham open Monday to Thursday, 10am – 4pm.



Scrapers come in many shapes and sizes and move earth from one location to another. Scrapers do the job of a tipper truck and an excavator, all rolled into one. Keep an eye out over the coming months and you'll notice several of these big machines working on site



Where are we?

Our site office compound will be located at the corner of Elizabeth Drive and Badgerys Creek Road.



Construction hours

Mon to Fri 7am – 6pm
Saturdays 8am – 1pm



Project contact details

To find out more about the project, please contact:

Western Sydney Airport

Ph: 1800 972 972

info@wsaco.com.au

Bulk Earthworks

wsabe.supply@cpbljv.com.au

wsabe.employment@cpbljv.com.au

wsabe.enquiry@cpbljv.com.au



Traffic control

Traffic controllers and signage are in place in the areas surrounding the Bulk Earthworks site.

For your safety please be aware of temporary speed zones and follow directions as required.



We speak your language

Need an interpreter?

Call our Translating and

Interpreting Service on **131 450**.

For more information, visit westernsydney.com.au

BEW-2002

WesternSydney Airport

flyWSA

WesternSydney Airport

Western_Sydney_Airport