



**Western
Sydney
Airport**



Bulk earthworks
March and April 2020

Bulk earthworks continuing for Western Sydney Airport

Dear Neighbour,

Western Sydney Airport Bulk Earthworks Project involves moving up to 25 million cubic metres of earth to support construction of the major elements of the airport, including the runway and passenger terminal.

This project is being delivered by the CPB Contractors and Lendlease Joint Venture (CPBLLJV) on behalf of Western Sydney Airport.

Construction activities

In March and April construction activities will include major earthworks; topsoil stripping; Aboriginal heritage and salvage works; vegetation clearing, mobilisation of earth moving plant; haul road construction; construction of temporary basins; surveying; relocation of native plants and importation of sandstone materials.

Construction hours will be from 7am to 6pm Monday to Friday and 8am to 1pm on Saturday.

Construction of **the main site compound** located on the corner of Elizabeth Drive and Badgerys Creek Road, Badgerys Creek will be completed in the coming months.

Please see the map overleaf for our construction areas.

Out-of-hours work

Some out of hours works will be required during the delivery of the Bulk Earthworks Project. These include refueling and maintenance of machinery, vegetation clearing and deliveries to the site. These works may cause a little noise. We will make every effort to minimise impact to local residents.

Some of our mitigation measures include the use of non-tonal reversing beepers, positioning of site entry and exit points as far away from residents as possible, staggering work in certain areas where possible and monitoring of noise.

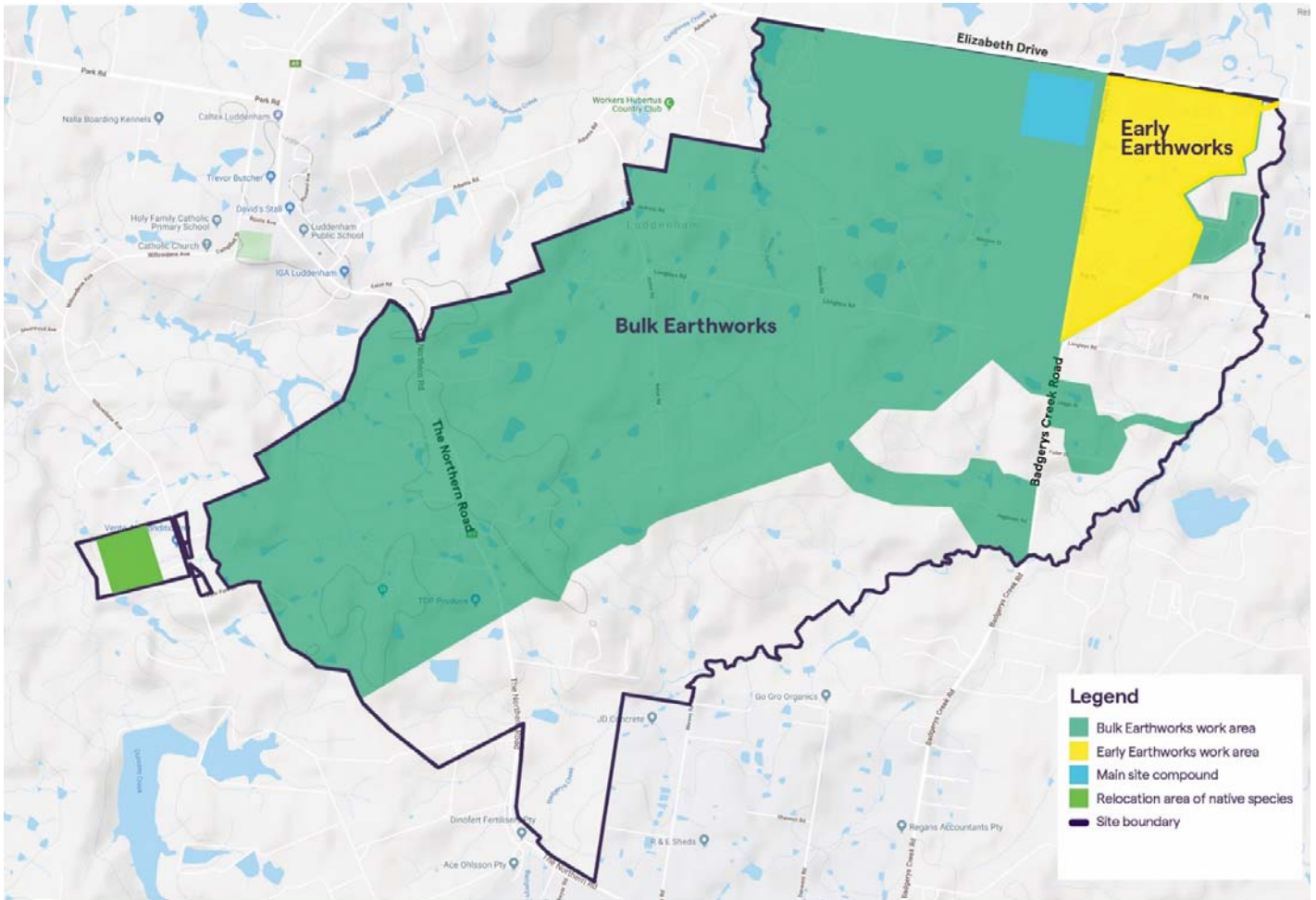
We are working closely with our neighbours as we deliver both the early earthworks and bulk earthwork projects to build Western Sydney International Airport and will continue to update you on our progress.

Please contact our Project Team on **1800 972 972** or via email at info@wsaco.com.au.

For more information please visit westernsydney.com.au




Bulk earthworks media event March 2020



Legend

- Bulk Earthworks work area
- Early Earthworks work area
- Main site compound
- Relocation area of native species
- Site boundary

 **Where are we?**
 Our site office compound is located at the corner of Elizabeth Drive and Badgerys Creek Road.


  **Project contact details**
 To find out more about the project, please contact:


Western Sydney Airport
 Ph: 1800 972 972
 info@wsaco.com.au

Bulk Earthworks
 wsabe.supply@cpbljv.com.au
 wsabe.employment@cpbljv.com.au

 **Construction hours**
 Mon to Fri 7am – 6pm
 Saturdays 8am – 1pm

Out of Hours Work
 Mon to Fri 6pm - 6am.
 (Vehicle maintenance, surveying and oversize vehicle sandstone importation.)
 Mon to Fri 6am - 6pm
 (Vegetation clearing)

 **Traffic control**
 Traffic controllers and signage are in place in the areas surrounding the Bulk Earthworks site.
 For your safety please be aware of temporary speed zones and follow directions as required.

 **We speak your language**
 Need an interpreter?
 Call our Translating and Interpreting Service on **131 450**.

For more information, visit westernsydney.com.au

BEC-2003

-  Western Sydney Airport
-  flyWSA
-  Western Sydney Airport
-  Western_Sydney_Airport