



# Major earthworks – Construction Update

June 2020

Dear Neighbour,

Western Sydney Airport Major Earthworks project involves moving up to 25 million cubic metres of earth to support construction of the major elements of the airport, including the runway and passenger terminal.

This project is being delivered by the CPB Contractors and Lendlease Joint Venture (CPBLLJV) on behalf of Western Sydney Airport.

## Construction activities will include:

- major earthworks
- construction of maintenance workshops
- topsoil stripping
- aboriginal heritage and salvage work
- vegetation clearing
- mobilisation of earth moving equipment
- construction of haul roads
- dewatering pre-existing waterways and dams
- construction of temporary basins
- removal of existing utilities and fences
- relocation of native plants
- Operation of the maintenance workshops to keep our fleet of machines running and refueled.
- Vegetation clearing operations to reduce interaction with other activities.
- Dewatering activities may be required out of hours, dependent on weather forecasts.
- Importing sandstone material, delivering heavy machinery and equipment to site. This is required to happen when the road network is not as congested.
- Survey and testing activities.
- Project signage installation; and
- other construction support activities that have been assessed to have minimal impact to the surrounding community.

A new southern maintenance workshop and compound, near The Old Northern Road is being constructed, and will be operational this month. Our new northern maintenance workshop, near Anton Road will also commence operations this month.

## Works outside of standard construction hours

Some out of hours work is required to support main construction activities. These out of hours activities are required to ensure the airport can be constructed in a safe and efficient manner.

Out of hours support activities will include the following key activities:

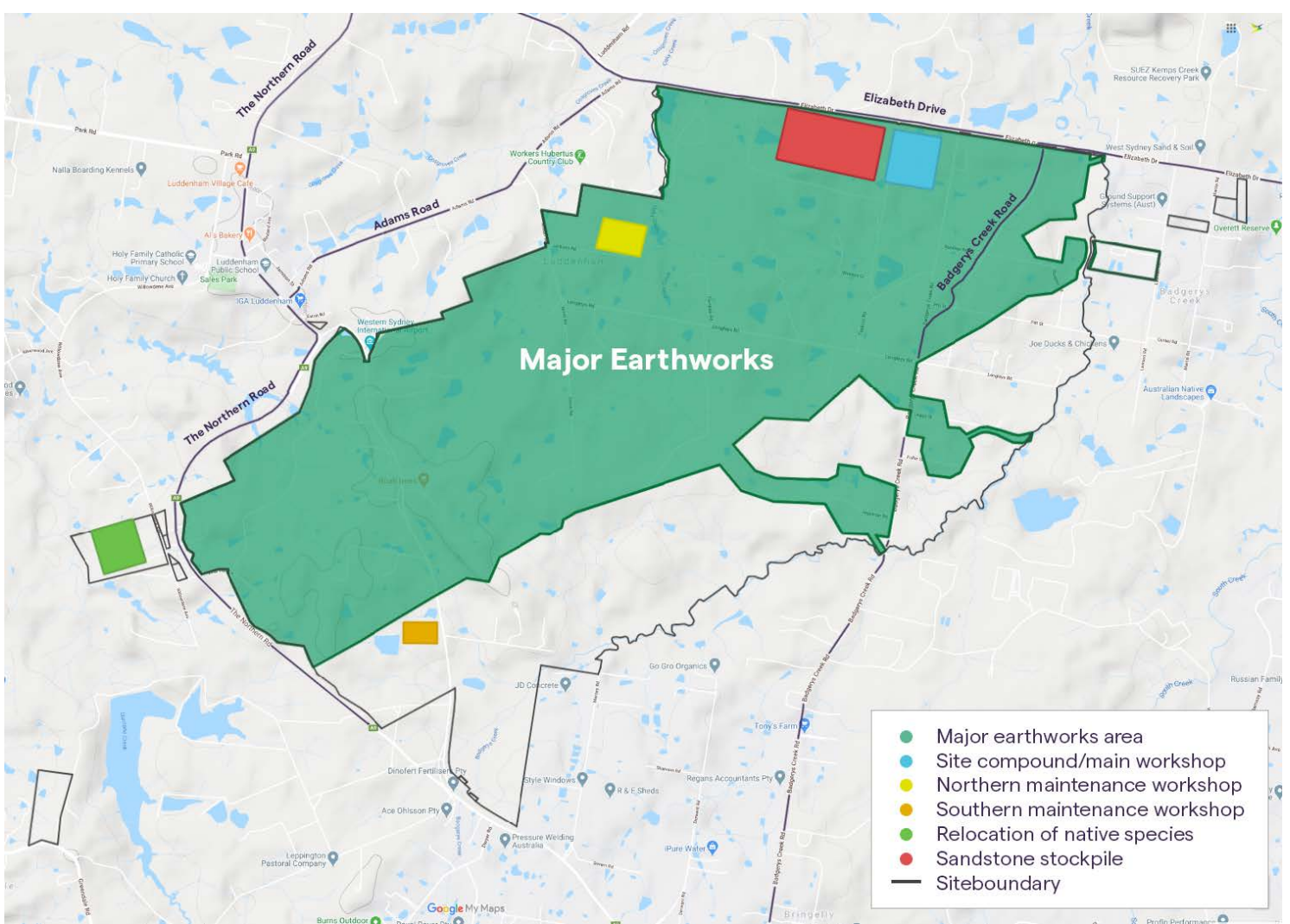
- Preparation and shut down earthworks activities. This is required to reduce heavy plant interaction and to ensure the fleet can operate in a safe and efficient manner during standard hours.

These works may cause some noise. We will make every effort to minimise impact to residents.

We are working closely with our neighbours as we deliver the major earthworks project to build Western Sydney International Airport and will continue to update you on our progress.

## Have your Say

We are interested to hear better ways to share information on our works please feel free to send through any feedback or suggestion to our Project Team on **1800 972 972** or via email at [info@wsaco.com.au](mailto:info@wsaco.com.au).



### Project contact details

To find out more about the project, please contact:

**Western Sydney Airport**

Ph: 1800 972 972

[info@wsaco.com.au](mailto:info@wsaco.com.au)

**Major Earthworks**

[wsabe.supply@cpbljv.com.au](mailto:wsabe.supply@cpbljv.com.au)

[wsabe.employment@cpbljv.com.au](mailto:wsabe.employment@cpbljv.com.au)



### Where are we?

Our site office compound is located at the corner of Elizabeth Drive and Badgerys Creek Road.



### We speak your language

Need an interpreter?

Call our Translating and

Interpreting Service on **131 450**.



### Traffic control

Traffic controllers and signage are in place in the areas surrounding the Major Earthworks site.

For your safety please be aware of temporary speed zones and follow directions as required.

### Out of hours

- **Preparation and shutdown earthworks**  
These activities will be carried out from 5am to 8pm Monday to Friday and 8am -5pm on Saturday
- **Maintenance Workshops**  
from 5am to 11pm, Monday to Sunday
- **Vegetation clearing**  
from 6am to 6pm, Monday to Friday
- **Importation of sandstone, delivery of heavy machinery and equipment, vehicle maintenance, survey and testing activities**  
from 6pm to 6am Monday to Sunday

For more information, visit

**[westernsydney.com.au](http://westernsydney.com.au)**

BEC- 2005