



**Western
Sydney
Airport**



Major earthworks – Construction Update

September 2020

Dear Neighbour,

Western Sydney Airport Major Earthworks project involves moving up to 25 million cubic metres of earth to support construction of the major elements of the airport, including the runway and passenger terminal. This project is being delivered by the CPB Contractors and Lendlease Joint Venture (CPBLLJV) on behalf of Western Sydney Airport.

Construction activities completed

- construction of heavy plant maintenance workshops
- removal of The Old Northern Road asphalt
- translocation of native plant species to the Willowdene Avenue Environmental Conservation Zone
- construction of all temporary water basins
- 3 million cubic metres of earth moved



Construction hours

Mon to Fri 7am – 6pm
Sat 8am – 1pm

Ongoing works include

- major earthworks
- vegetation clearing
- remediation works
- importation of sandstone material
- dewatering activities
- installation of permanent airport drainage
- survey and geotechnical works

Work outside of standard construction hours

Out of hours work is required to support main construction activities. These works may cause some noise and have been assessed, with impacted residents being notified. Every effort will be made to minimise impacts to residents.

These measures include locating out of hours works as far away from residents as possible, restricting intrusive activities (such as crushing) to normal working hours, modifications to machinery such as the use of non-tonal reversing beepers, positioning of

site entry and exit points as far away from residents as possible, staggering work in certain areas and noise monitoring.

Out of hours

- **Earthworks activities**
Mon to Fri 5am - 8pm
Sat 8am - 5pm
- **Workshop maintenance activities**
Mon to Sun 5am - 11pm
- **Importation of sandstone, heavy machinery and equipment and mulch haulage**
Mon to Sun 6pm - 6am

We are working closely with our neighbours as we deliver the major earthworks project to build Western Sydney International Airport and will continue to update you on our progress.

If you have any enquiries or would like to provide feedback, please contact the 24hr information line **1800 972 972** or via email info@wsaco.com.au. For more information on Western Sydney International Airport please visit westernsydney.com.au.

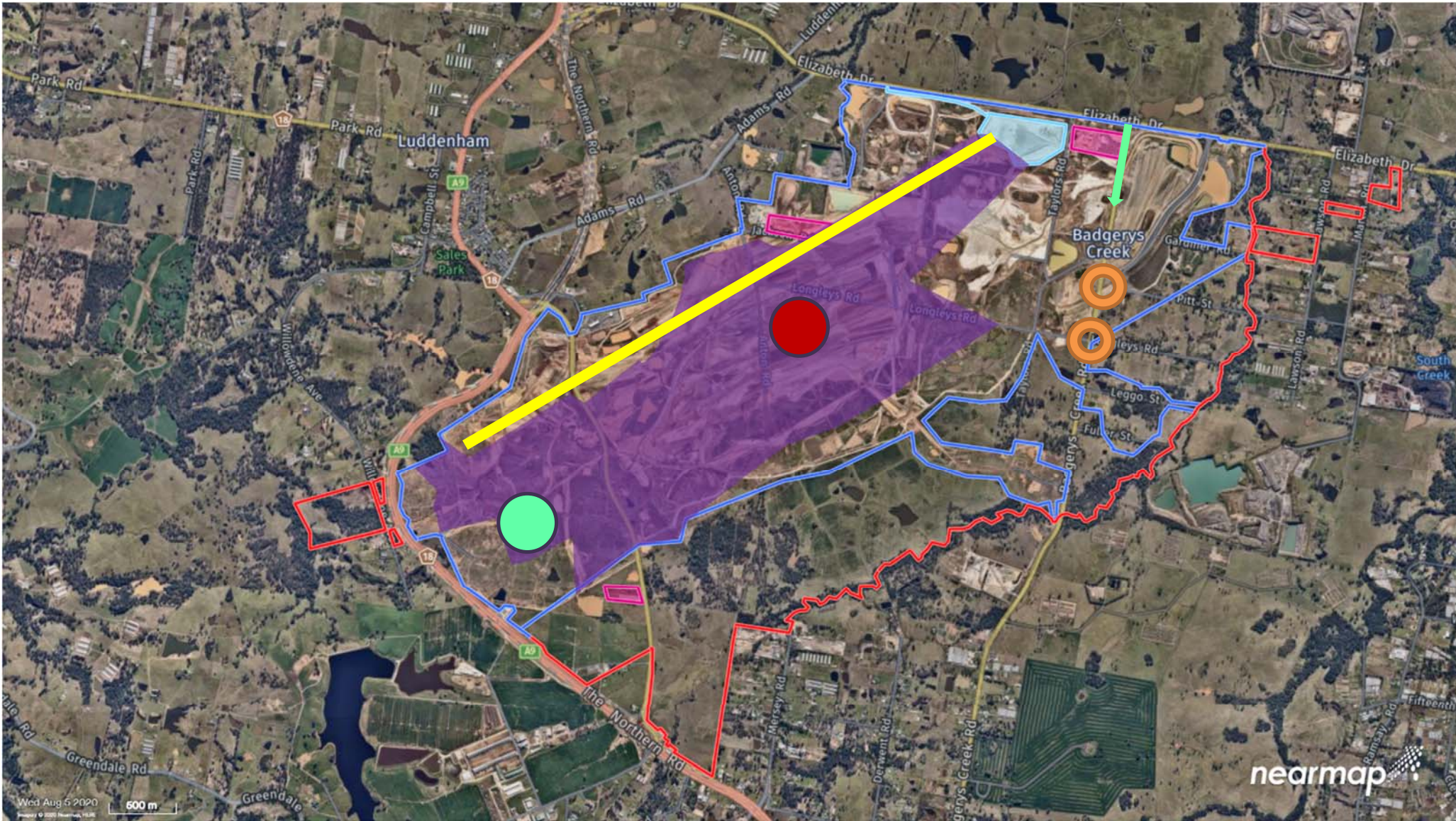


Traffic control

Traffic controllers and signage will be in place on Badgerys Creek Road, between Longleys Road and Pitt Street. For your safety please be aware of temporary speed zones and follow directions as required.

We speak your language

Need an interpreter? Call our translating and Interpreting Service on 131 450.



Map is not to scale and identified 'future' landmarks locations may vary. August 2020.

Connect with us



1800 972 972

westernsydney.com.au

Legend

- Major earthworks area
- Western Sydney Airport area
- ▭ Maintenance workshop
- ▭ Sandstone stockpile
- Traffic control
- Earthworks activities (Out of Hours)
- Future terminal location
- ← Future rail and road connection
- Future freight precinct location
- Future runway location

