

# Weekend closure of Badgerys Creek Road May 2022

Dear Neighbour,

Western Sydney Airport (WSA) is relocating the existing round-a-bout at the Badgerys Creek Road and Pitt Street intersection to the west of its current location. Works are being completed by WSA's contractor, the CPB Acciona Joint Venture.

The upgrade will provide a safe access to the site for construction of the Airport and the new Sydney Metro - Western Sydney Airport train line.

As part of this work, we need to temporarily close Badgerys Creek Road over one weekend to complete final road works before opening the new round-a-bout to traffic.

## When will work commence?

Work will commence from 7pm Friday 20 May 2022 and continue until 5am Monday 23 May 2022, weather permitting.

If the work is unable to be completed on these dates, we will conduct this work on the following weekend (Friday 27 May to Monday 30 May 2022).

Works will include:

- Profiling and removal of existing road pavement;
- Earthwork activities and spray sealing of tie-in areas;
- Installation of permanent signage;
- Concrete barrier placement to support future construction staging; and
- Asphaltting, line-marking and associated finishing works.

We will be using excavators, scrapers, rollers, tipper trucks, a milling machine, asphalt pavers, and other construction machinery to undertake this work.

You can expect to see increased construction activity in the work area outlined on the map provided on the following page.

## How will you be affected?

Due to busy traffic conditions during weekdays, we will do this work over one weekend. During this work we will temporarily close Badgerys Creek Road for one weekend.

We will do everything we can to keep disturbances to a minimum including completing the noisiest activities at the beginning of a shift (where possible) and switching off plant and machinery when not in use.

## Traffic changes

To create a safe zone for workers, there will be changed traffic conditions including a full closure of Badgerys Creek Road. Detours will be in place for road users via Elizabeth Drive and The Northern Road.

Motorists are advised to observe all project signage and traffic control directions during construction.

When the new round-a-bout opens to traffic on Monday morning, motorists will use the 'second exit' to continue straight on Badgerys Creek Road. Please refer to the mark-up on the final page showing the configuration of the new round-a-bout.

## Property access

Access to properties along Badgerys Creek Road will be maintained at all times during the closure. Access to properties should be made via The Northern Road, as it will not be possible for motorists to enter Badgerys Creek Road from Elizabeth Drive during the closure.

We welcome your feedback on how we can better engage with our community during our construction work.

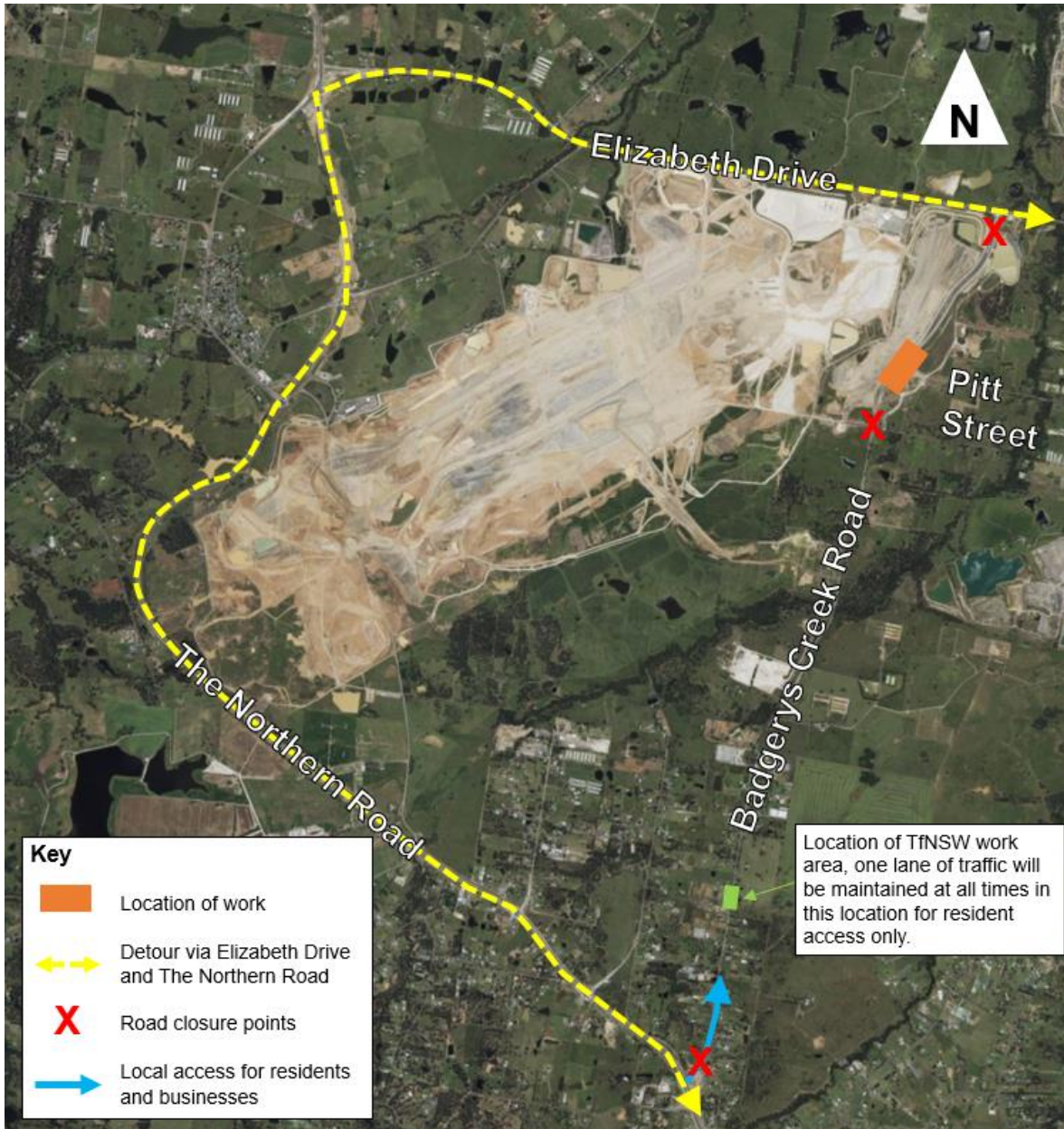
For further information or enquiries about our construction activities, please contact our information line 1800 972 972 or send an email to [info@wsaco.com.au](mailto:info@wsaco.com.au)



## Transport for NSW work at 215 Badgerys Creek Road

Transport for NSW will be constructing a roundabout, including asphaltting, along Badgerys Creek Road during the Western Sydney Airport weekend closure of Badgerys Creek Road, Bringelly from **7pm Friday 20 May to 5am Monday 23 May**, weather permitting. If the work is unable to be completed on these dates, we will complete this work on the following weekend (Friday 27 May to Monday 30 May), weather permitting. This will be completed as part of the works to construct a new roundabout between 205 and 215 Badgerys Creek Road, Bringelly. Access to properties will be maintained for local traffic through our work area. We are planning to work 24 hours during the weekend closure, weather permitting. High noise works will finish by midnight whenever possible. For urgent calls outside business hours, please call Transport for NSW on their 24/7 construction response line 1800 775 465.

### Location of work and detour



We will continue to work closely with our neighbours as we deliver this project and other projects within the airport site to build Western Sydney International (Nancy-Bird Walton) Airport and we will update you as work progresses.



## Configuration of the new round-a-bout



We have added a fourth 'leg' to the new round-a-bout on the western side which will create a new access to the site for construction vehicles only. When the new round-a-bout opens to traffic on Monday morning, motorists will use the 'second exit' to continue straight on Badgerys Creek Road.

If you are having difficulty understanding this document, please call the Translating and Interpreting Service (TIS) on 131 450 and ask them to contact WSA on 1800 972 972.

هل تحتاج إلى مترجم؟ يرجى الاتصال بخدمة الترجمة الخطية والشفهية (TIS) على الرقم 131 450 واطلب منهم الاتصال بمطار غرب سدني (WSA) على الرقم 1800 972 972.

क्या आपको दुभाषिए की ज़रूरत है? कृपया अनुवाद एवं दुभाषिया सेवा (Translating and Interpreting Service) (TIS) को 131 450 पर फोन करें और उनसे WSA से 1800 972 972 पर संपर्क कराने के लिए कहें।

您需要口译吗?请打电话131 450给翻译口译服务处 (TIS),请他们打电话1800 972 972跟WSA联络。

您需要口译嗎?請打電話131 450給翻譯口譯服務處 (TIS),請他們打電話1800 972 972跟WSA聯絡。

Cần một thông dịch viên? Hãy gọi đến Dịch vụ Phiên dịch và Thông dịch (TIS) qua số 131 450 và yêu cầu họ liên lạc WSA qua số 1800 972 972.