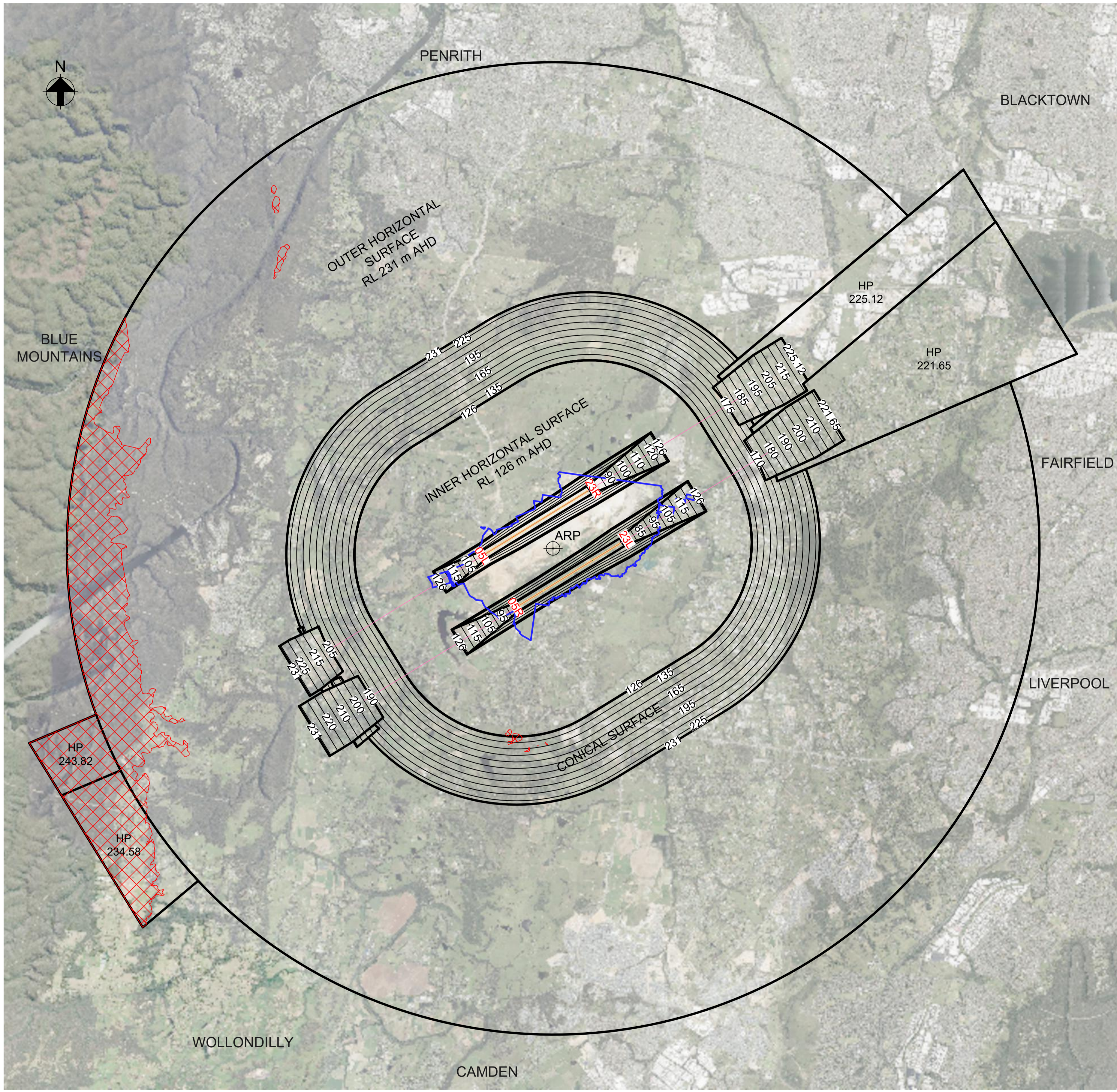


WESTERN SYDNEY INTERNATIONAL (NANCY-BIRD WALTON) AIRPORT

CASA MANUAL OF STANDARDS PART 139 - AERODROMES OBSTACLE RESTRICTION AND LIMITATION SURFACES



NOTE:

1. DISTANCES AND LENGTHS SHOWN IN METRES (m)
2. ELEVATIONS SHOWN IN METRES (m) (AUSTRALIAN HEIGHT DATUM)
3. HEIGHTS SHOWN IN METRES (m) RELATIVE TO REFERENCE ELEVATION DATUM (RED)
4. MAP GRID OF AUSTRALIA ZONE 56, USING GDA94 DATUM
5. HP- HORIZONTAL PLANE
6. THE OBSTACLE LIMITATION SURFACES WERE DEVELOPED IN ACCORDANCE WITH THE STANDARDS DEFINED IN: PART 139 (AERODROMES) MANUAL OF STANDARDS 2019 (AS AMENDED) (13 AUG 2020)
7. TERRAIN PENETRATION SOURCE: ICSM, RETRIEVED NOV 2022

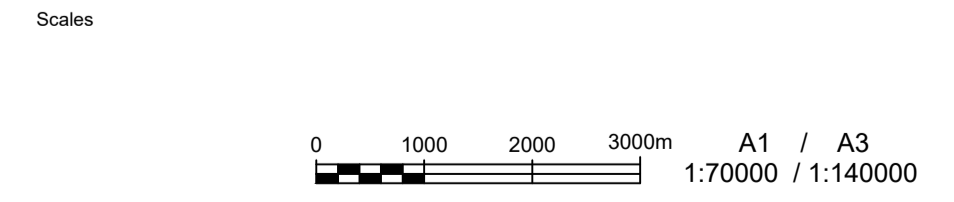
LEGEND:

- TERRAIN PENETRATION OF OLS
- AIRPORT BOUNDARY

DISCLAIMER:

This information is supplied by the Commonwealth and is reproduced here for information only. The information shown must be verified for accuracy and completeness by necessary investigation, site inspection and measurement. The Commonwealth owns the copyright to this drawing and the information contained within it. Reproduction of, or any dealing in, this drawing, or the information it contains is prohibited.

FOR INFORMATION ONLY



Issue	Date	By	Chkd	Appd

B	15.06.23	VX	LC	BT
Commonwealth Declaration				
A	02.11.22	VX	LC	BT
For Information				
Issue	Date	By	Chkd	Appd

Client
 Australian Government
 Department of Infrastructure, Transport,
 Regional Development, Communications and the Arts

Signature: _____ Date: _____

Job Title
 WESTERN SYDNEY
 INTERNATIONAL
 (NANCY-BIRD WALTON) AIRPORT

ARUP
 Level 5, 151 Clarence Street
 Sydney, NSW, 2000
 Tel +61(0)2 9320 9320 Fax +61(0)2 9320 9321
 www.arup.com

CONSULT AUSTRALIA
 Member Firm
 Arup Pty Ltd
 ABN 16 005 966 165

Drawing Title OBSTACLE LIMITATION SURFACES (OLS)	
Drawing Status For Information	Job No 292199
Drawing No MTIP-WSA-ARUP-DRG-00001	Issue B